

# Diagnosics of Invasive Aspergillosis: From Experimental Models to Clinical Evaluation

Scott Filler, UCLA  
Laura Najvar, UTHSCSA

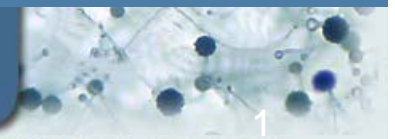
*IAAM*



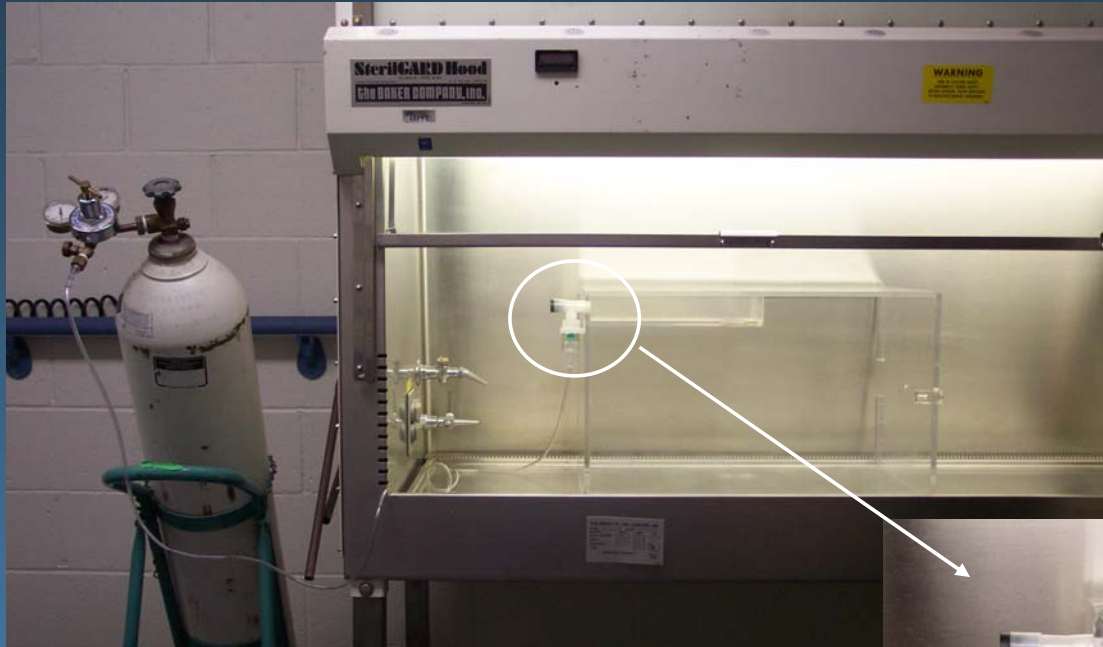
INVASIVE ASPERGILLOSIS ANIMAL MODELS

**ASTE**C

ASPERGILLUS TECHNOLOGY CONSORTIUM



# Inhalation Chamber Apparatus for Aspergillosis



- Acrylic chamber for up to 40 mice
- Standard respiratory therapy nebulizer
- Compressed air tank with regulator

Sheppard. AAC 2004;48:1908

IAAM

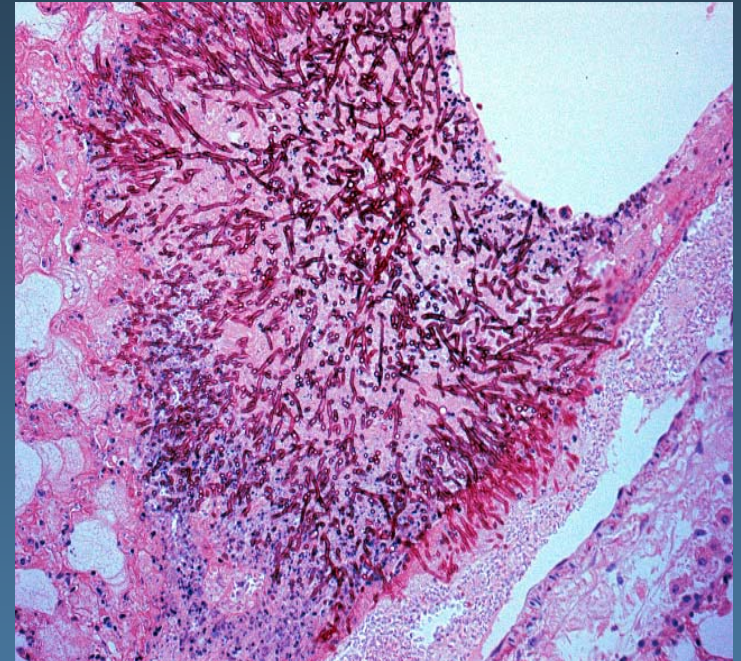
INVASIVE ASPERGILLOSIS ANIMAL MODELS

ASTEAC

ASPERGILLUS TECHNOLOGY CONSORTIUM

# Inhalational Models Advantages

- Relatively low inoculum (~1000 conidia) delivered to alveoli
- Recapitulates human disease
- Reproducible outcome between different experiments and laboratories
- Late mortality
  - Allows multiple time point sampling without survivor bias
- Mortality complete by 14 days



Sheppard. AAC 2004;48:1908  
Sheppard. AAC 2006;50:3501

IAAM



INVASIVE ASPERGILLOSIS ANIMAL MODELS

ASTEAC

ASPERGILLUS TECHNOLOGY CONSORTIUM



# Key Question: Model Refinement/Diagnostic Targets

## Neutropenic vs. Non-neutropenic Model

- **Neutropenic:**
  - Cyclophosphamide at 250 mg/kg SC on day -2 and 200 mg/kg SC on day +3 of infection
  - Cortisone acetate at 5 mg/mouse SC on days -2 and +3 of infection
- **Non-neutropenic:**
  - Cortisone acetate at 10 mg/mouse SC on days -4, -2, 0, +2, +4 of infection
- Ceftazidime IP while immunosuppressed

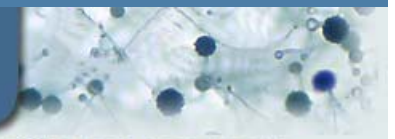
IAAM



INVASIVE ASPERGILLOSIS ANIMAL MODELS

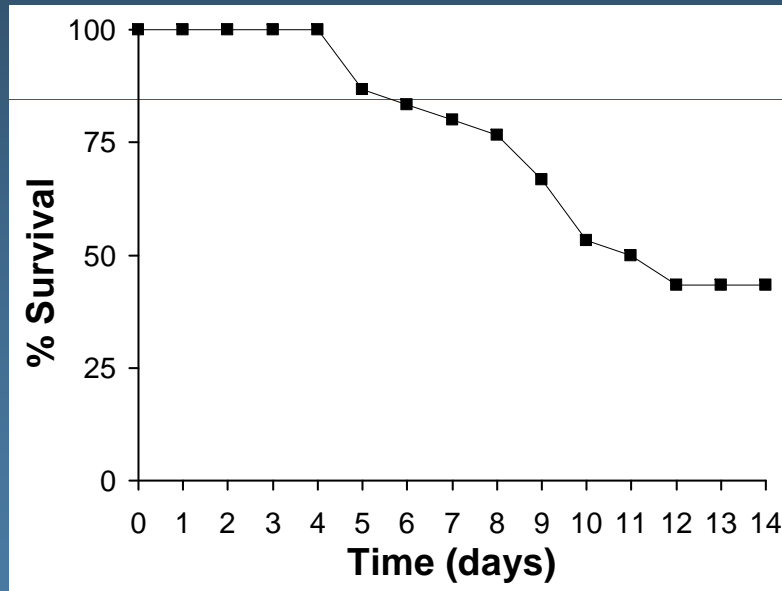
ASTEAC

ASPERGILLUS TECHNOLOGY CONSORTIUM

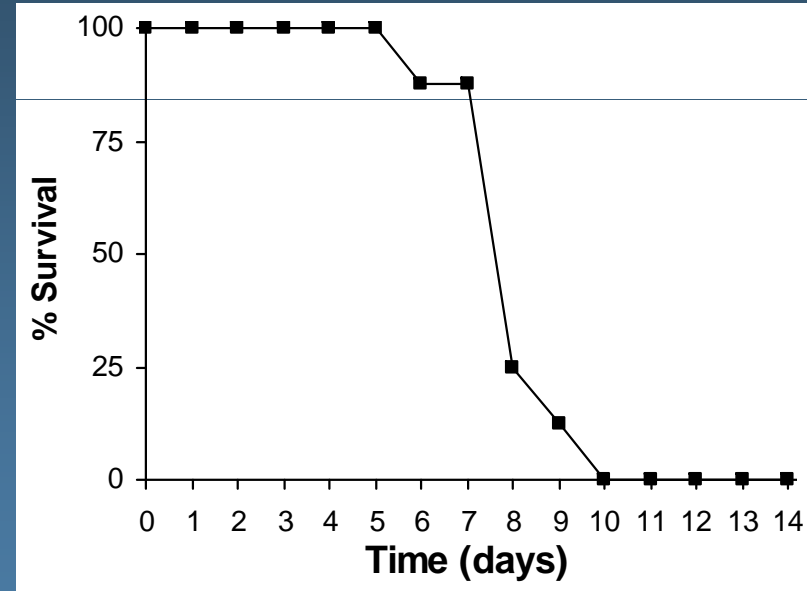


# Effects of Different Types of Immunosuppression on Mouse Survival

**Neutropenic**  
(Cortisone Acetate  
+ Cyclophosphamide)



**Non-neutropenic**  
(Cortisone Acetate)



Spikes. JID 2008;197:479

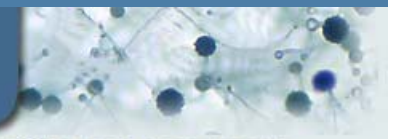
IAAM



INVASIVE ASPERGILLOSIS ANIMAL MODELS

ASTEC

ASPERGILLUS TECHNOLOGY CONSORTIUM

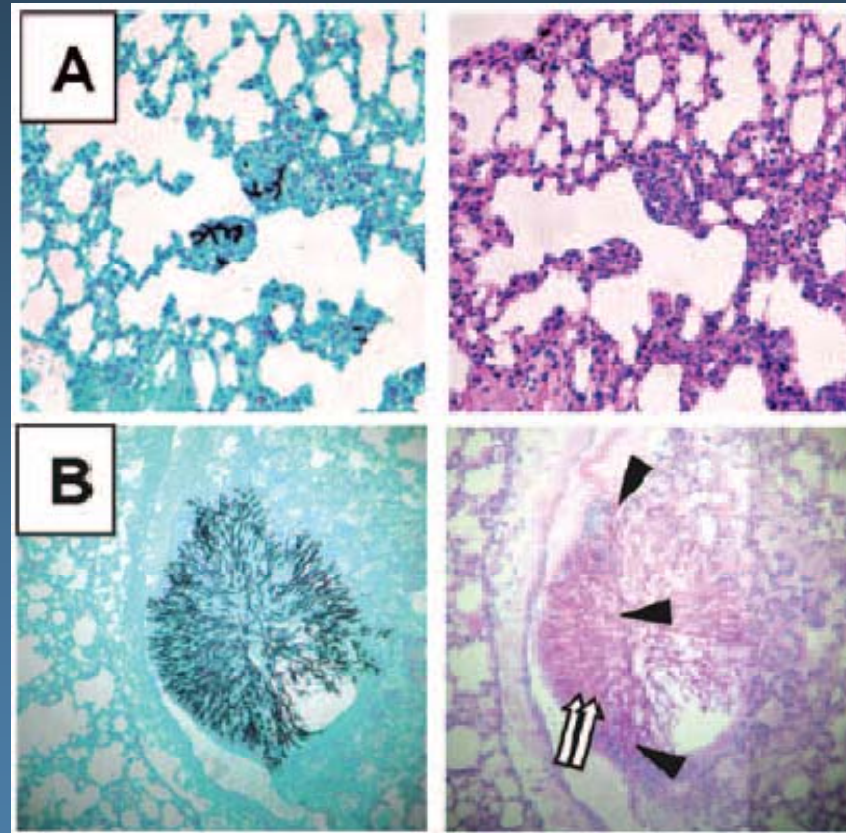


# More Rapid Development of Disease in the Non-neutropenic Model

**Day 4**

**Neutropenic**  
(Cortisone Acetate  
+ Cyclophosphamide)

**Non-neutropenic**  
(Cortisone Acetate)



Chiang. I&I 2008;76:3429

**IAAM**

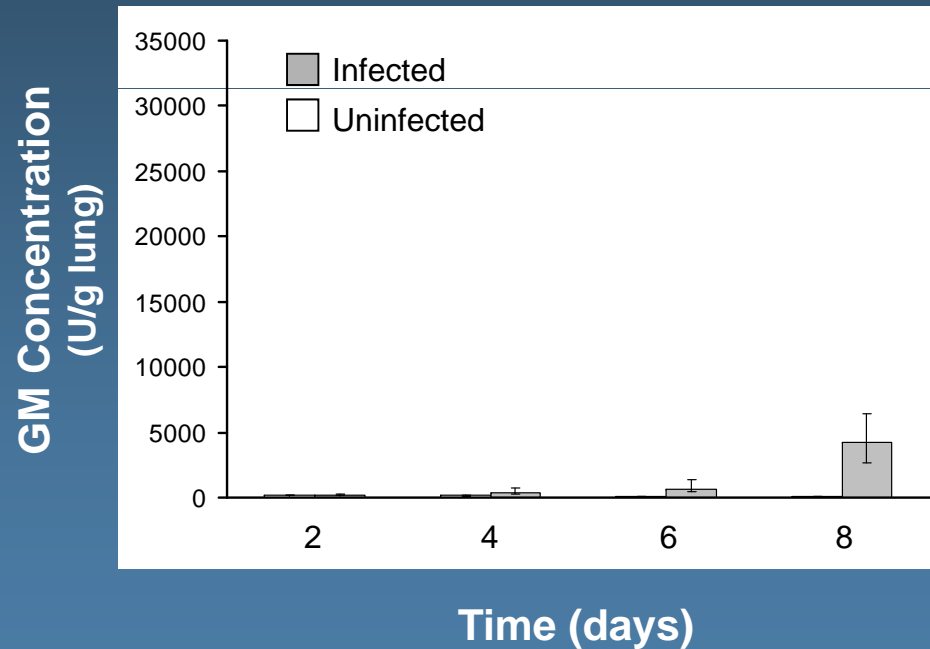
INVASIVE ASPERGILLOSIS ANIMAL MODELS

**ASTEC**

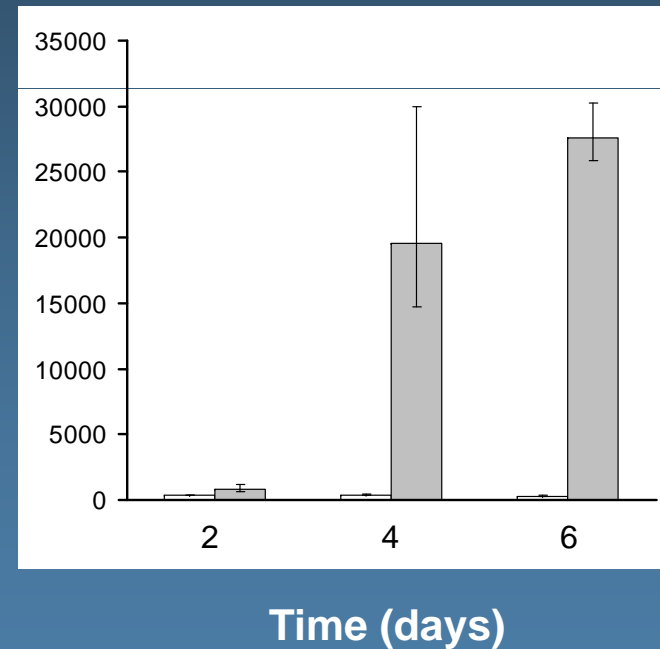
ASPERGILLUS TECHNOLOGY CONSORTIUM

# Lung GM Levels are Higher in Non-Neutropenic Mice

**Neutropenic**  
(Cortisone Acetate  
+ Cyclophosphamide)

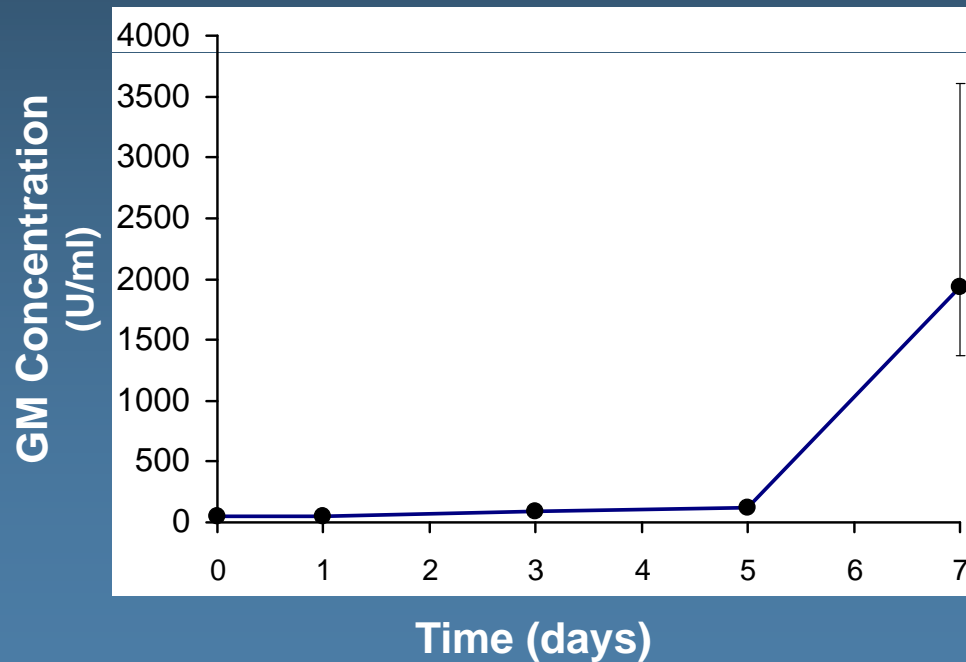


**Non-neutropenic**  
(Cortisone Acetate)

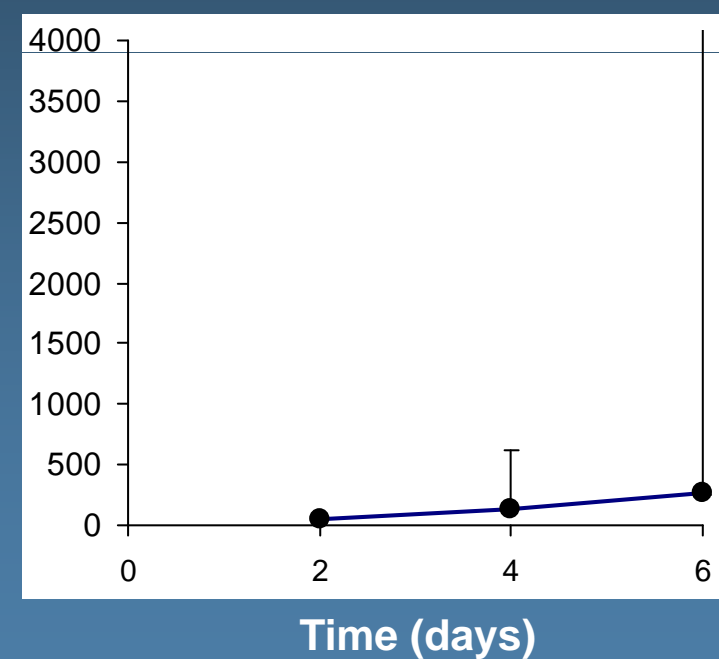


# Serum GM Levels are Higher in Neutropenic Mice

**Neutropenic**  
(Cortisone Acetate  
+ Cyclophosphamide)



**Non-neutropenic**  
(Cortisone Acetate)



IAAM

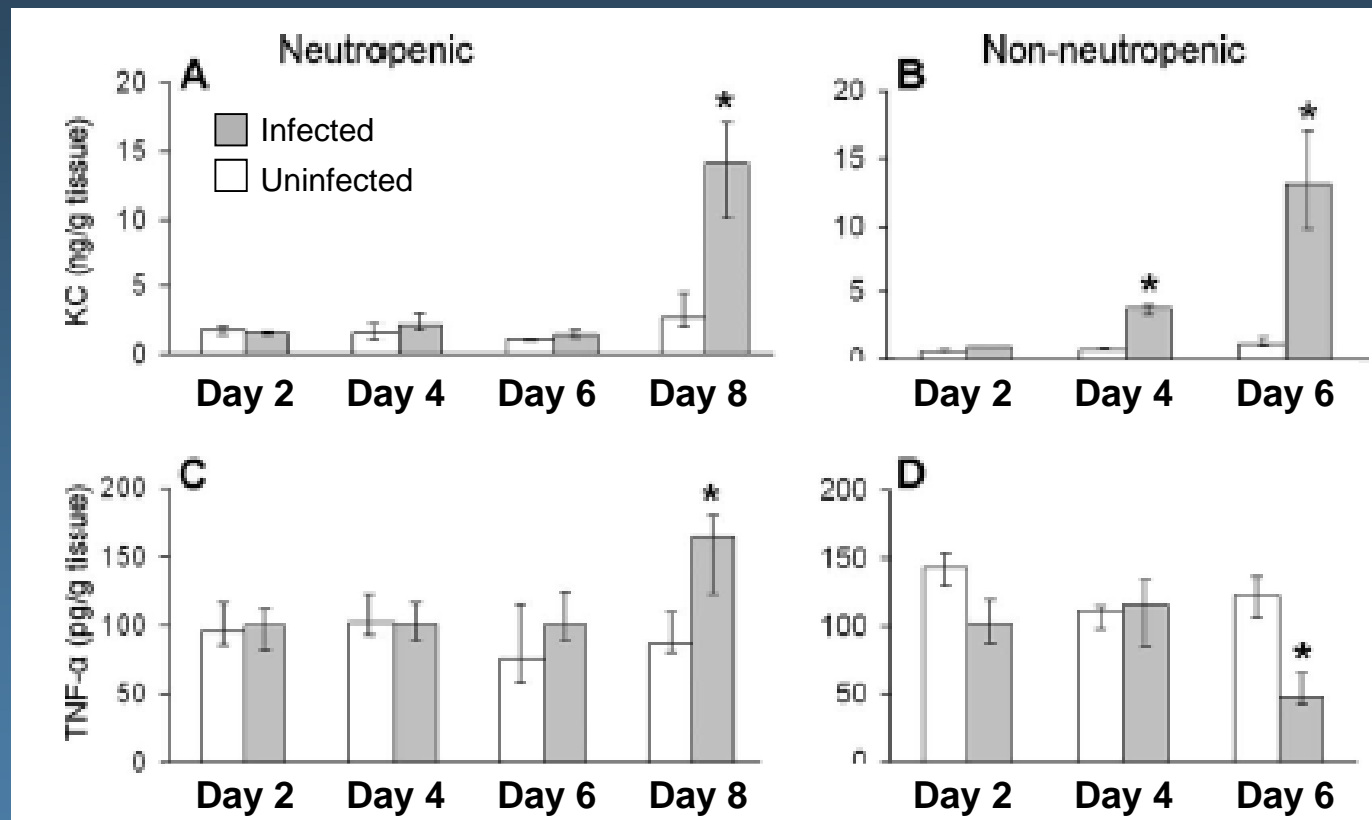
INVASIVE ASPERGILLOSIS ANIMAL MODELS

ASTECC

ASPERGILLUS TECHNOLOGY CONSORTIUM



# The Pulmonary Cytokine Response is Different in Neutropenic vs. Non-neutropenic Mice



Chiang. I&I 2008;76:3429

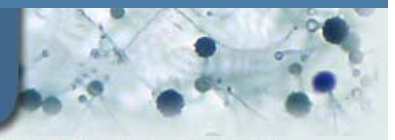
IAAM



INVASIVE ASPERGILLOSIS ANIMAL MODELS

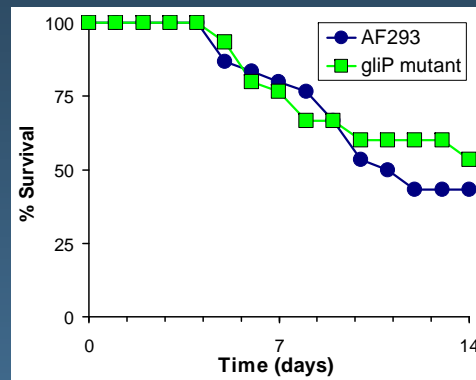
ASTECC

ASPERGILLUS TECHNOLOGY CONSORTIUM

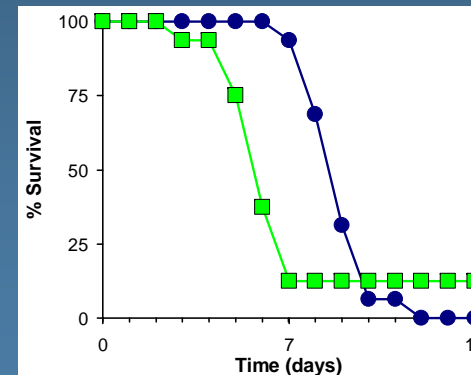
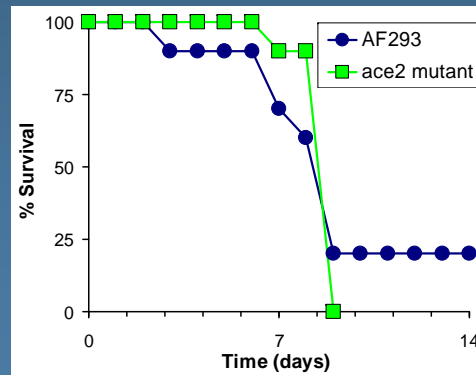
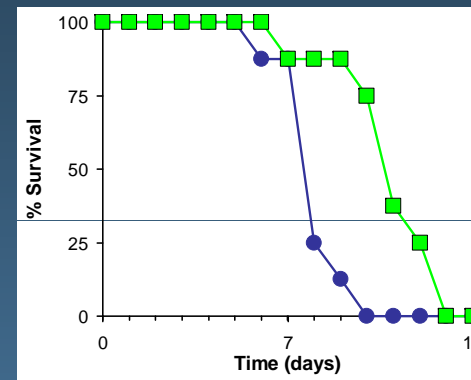


# Effects of Different Types of Immunosuppression on Virulence Mechanisms

## Neutropenic



## Non-neutropenic



Spikes. JID 2008;197:479; Ejzykowicz. Molec Microbiol 2009;72:155

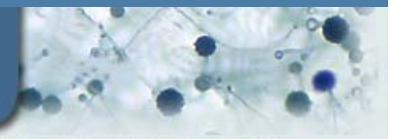
IAAM



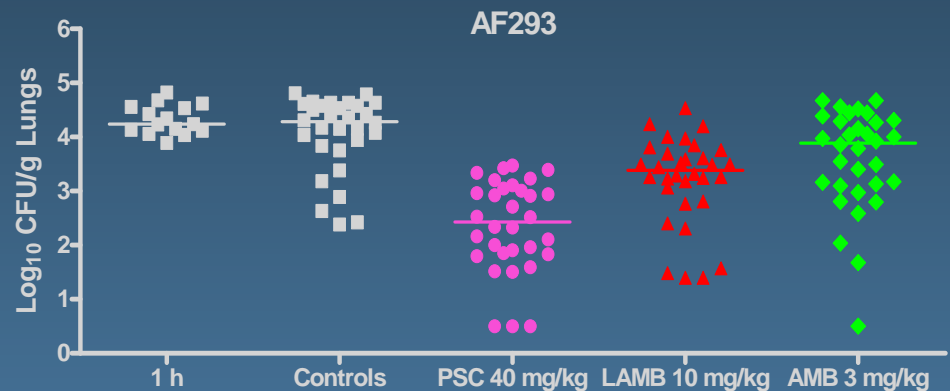
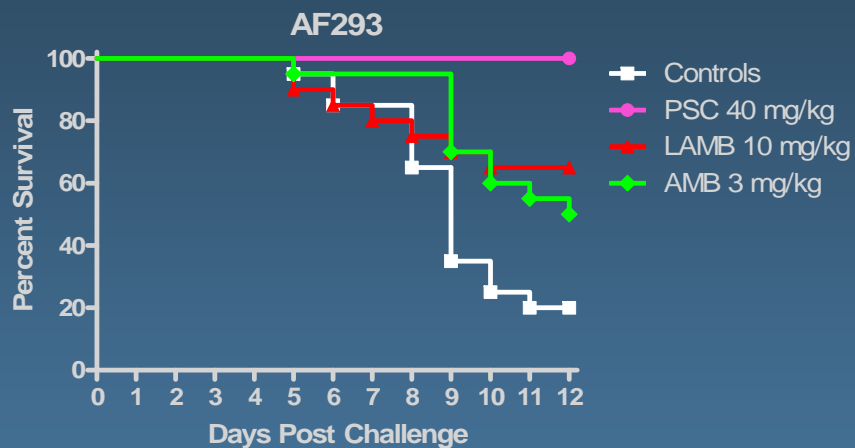
INVASIVE ASPERGILLOSIS ANIMAL MODELS

ASTEAC

ASPERGILLUS TECHNOLOGY CONSORTIUM



# Posaconazole is Highly Efficacious in the Neutropenic Model



N<sub>≥</sub>18 mice/group. All treatments prolonged survival p<sub>≤</sub>0.0150.

N = 15 for 1h. N<sub>≥</sub>30 mice/group. All treatments reduced lung fungal burden compared to controls p<sub>≤</sub>0.0213.

Najvar LK, et al, ICCAC 2007 (abstract M-1848)

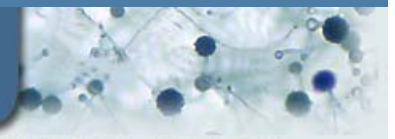
IAAM



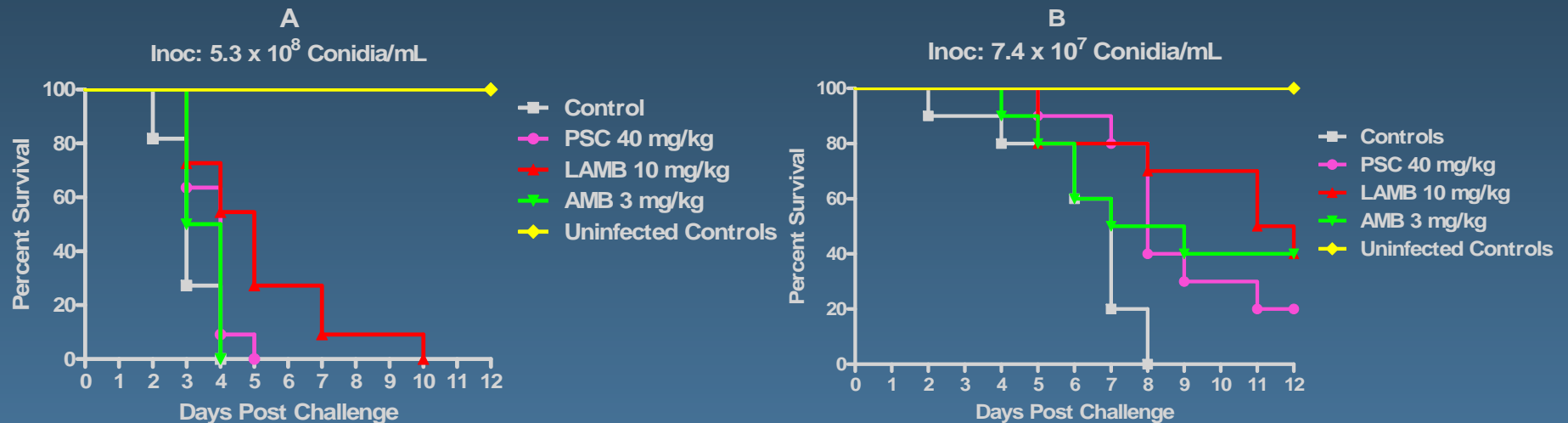
INVASIVE ASPERGILLOSIS ANIMAL MODELS

ASTEAC

ASPERGILLUS TECHNOLOGY CONSORTIUM



# Posaconazole is Less Efficacious in the Non-neutropenic Model



N=10 mice/group. Controls all succumbed by day 4 or 8. The median survival was prolonged for LAMB ( $p=0.006$ ) in A and both PSC ( $p=0.007$ ) and LAMB ( $p=0.009$ ) prolonged survival in B.

Najvar LK, et al, ICCAC/IDSA 2008 (abstract M-1561)

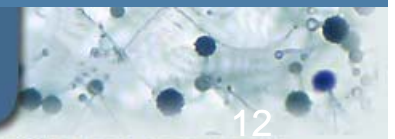
IAAM



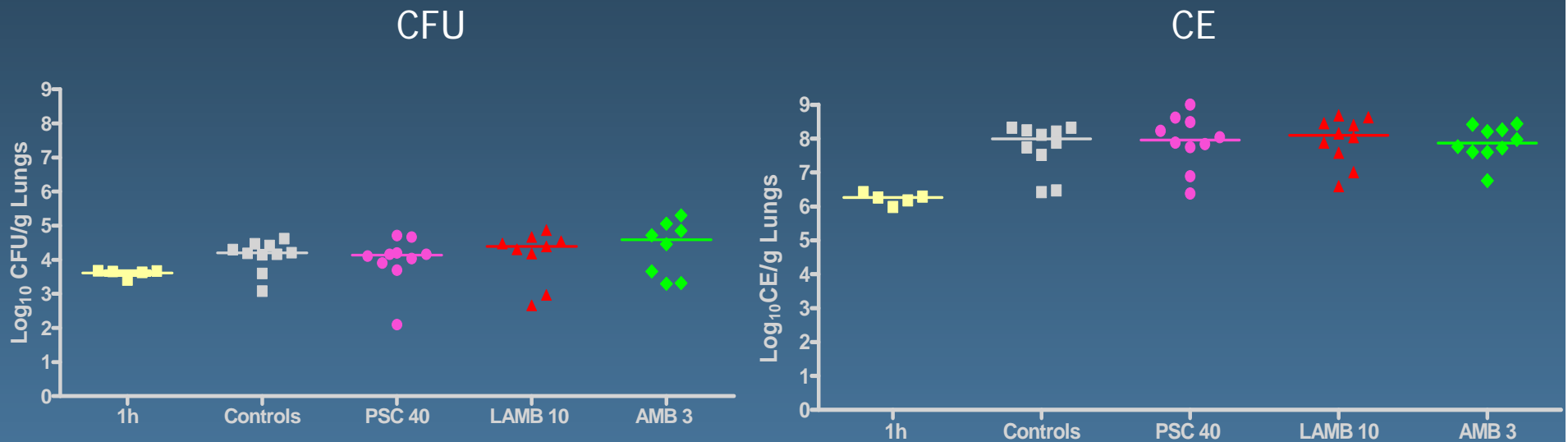
INVASIVE ASPERGILLOSIS ANIMAL MODELS

ASTEAC

ASPERGILLUS TECHNOLOGY CONSORTIUM



# No Therapy Reduced Pulmonary Tissue Burden in the Non-neutropenic Model



Inoculum:  $7.4 \times 10^7$  Conidia/mL. N= 5-10 mice/group. No therapy reduced the fungal burden.

Najvar LK, et al, ICCAC/IDSA 2008 (abstract M-1561)

IAAM



INVASIVE ASPERGILLOSIS ANIMAL MODELS

ASTECC

ASPERGILLUS TECHNOLOGY CONSORTIUM

# Summary

	Neutropenic	Non-neutropenic
Mortality	Late	Early
Pulmonary GM	Low	High
Serum GM	High	Low
Influence of AF virulence factors on mortality	Low	High
Response to posaconazole	Good	Poor

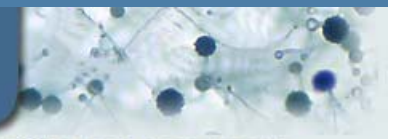
IAAM



INVASIVE ASPERGILLOSIS ANIMAL MODELS

ASTECC

ASPERGILLUS TECHNOLOGY CONSORTIUM



# Contributors and Collaborators

## Harbor-UCLA

- Hong Liu
- Lisa Chiang
- Norma Solis
- Daniele Ejzykowics

## McGill University

- Don Sheppard
- Fabrice Gravelat

## UT San Antonio

- Tom Patterson
- Laura Najvar
- William Kirkpatrick
- Ana Vallor
- Rosie Bocanegra
- Marcos Olivo
- Destiny Molina

IAAM



INVASIVE ASPERGILLOSIS ANIMAL MODELS

ASTECC

ASPERGILLUS TECHNOLOGY CONSORTIUM

